

HARKEN[®] HYDRAULIC FURLING INQUIRY/ORDER INFORMATION

Date _____ Service/Tech Contact _____

Customer _____

Address _____

Daytime Telephone _____ Fax _____

Boat Type _____ Length _____ Boat Name _____

Unit Size _____ Foil Type: Aluminum Carbon

HEADSTAY

Pin-to-Pin Headstay Length _____ Clevis Pin Diameter _____

Wire Diameter _____ Conventional 1 x 19
 High-Strength Stainless Steel Wire Specify Type _____

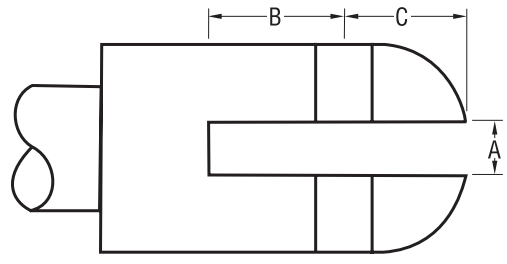
Rod Size _____ **Manufacturer:** Navtec Riggarna/OYS
 If your rod is -76 is it? Continuous Sectional

CHAINPLATE

Chainplate Thickness _____

Center of Clevis Pin to Top of Chainplate _____

Center of Clevis Pin to Bottom of Chainplate _____



Check standard toggle dimensions below. There will be an extra charge for custom toggles.

	Unit	Pin Ø		A		B		C	
		in	mm	in	mm	in	mm	in	mm
3		3/4	19.1	.761	19.3	1.821	46.3	1.083	27.5
		7/8	22.2	.888	22.6	2.125	54.0	1.263	32.1
3.25		7/8	22.2	.888	22.6	2.125	54.0	1.263	32.1
		1	25.4	1.024	26.0	2.530	64.3	1.484	37.7
3.5		7/8	22.2	.904	23.0	2.160	54.9	1.263	32.1
		1	25.4	1.028	26.1	2.530	64.3	1.484	37.7
		1 1/8	28.6	1.154	29.3	2.820	71.6	1.646	41.8
4		1 1/4	31.8	1.283	32.6	3.350	85.1	1.873	47.6
4.5		1 1/4	31.8	1.285	32.6	3.350	85.1	1.873	47.6
		1 3/8	34.9	1.409	35.8	3.660	93.0	2.075	52.7
		1 9/16	39.7	1.564	39.7	4.230	107.4	2.268	57.6